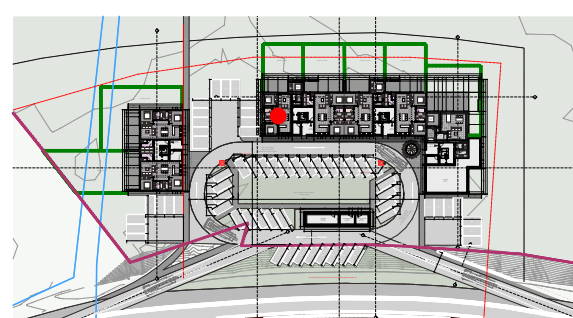




Projet logements N90 Basse-Sambre
Rue des Nobles 75
5190 Jemeppe-sur-Sambre

29 logements + 1 surface commerciale

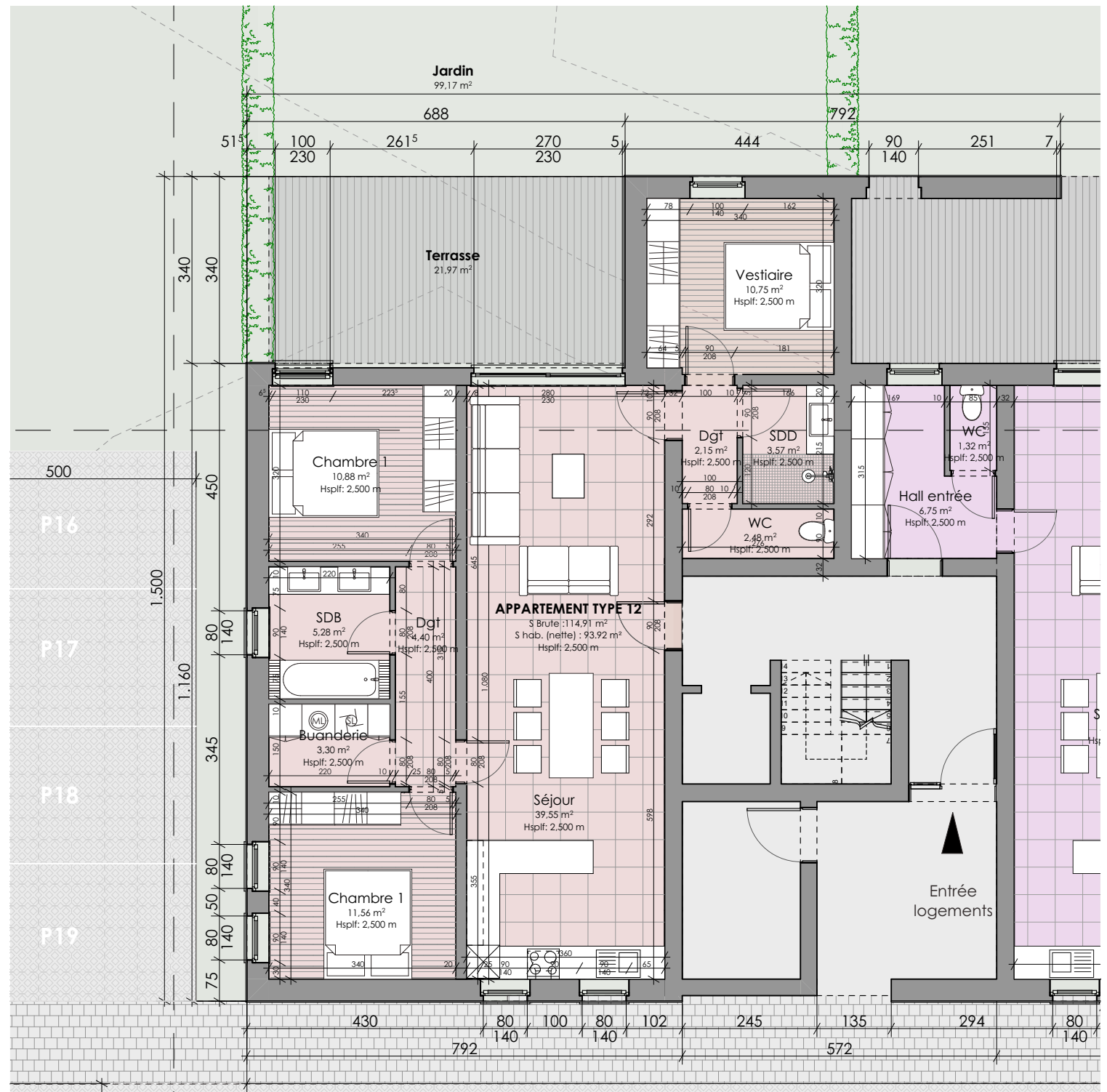


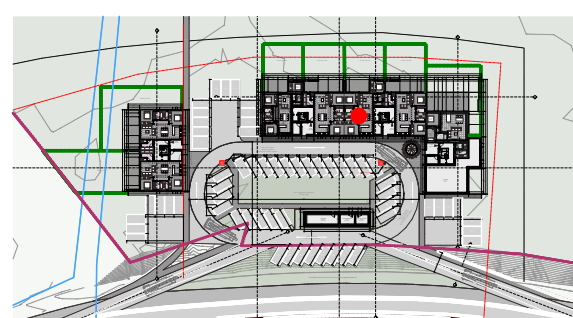


B0-1

Appartement TYPE 12

Surface Brute : 114.91 m²
 Surface nette : 93.92m²

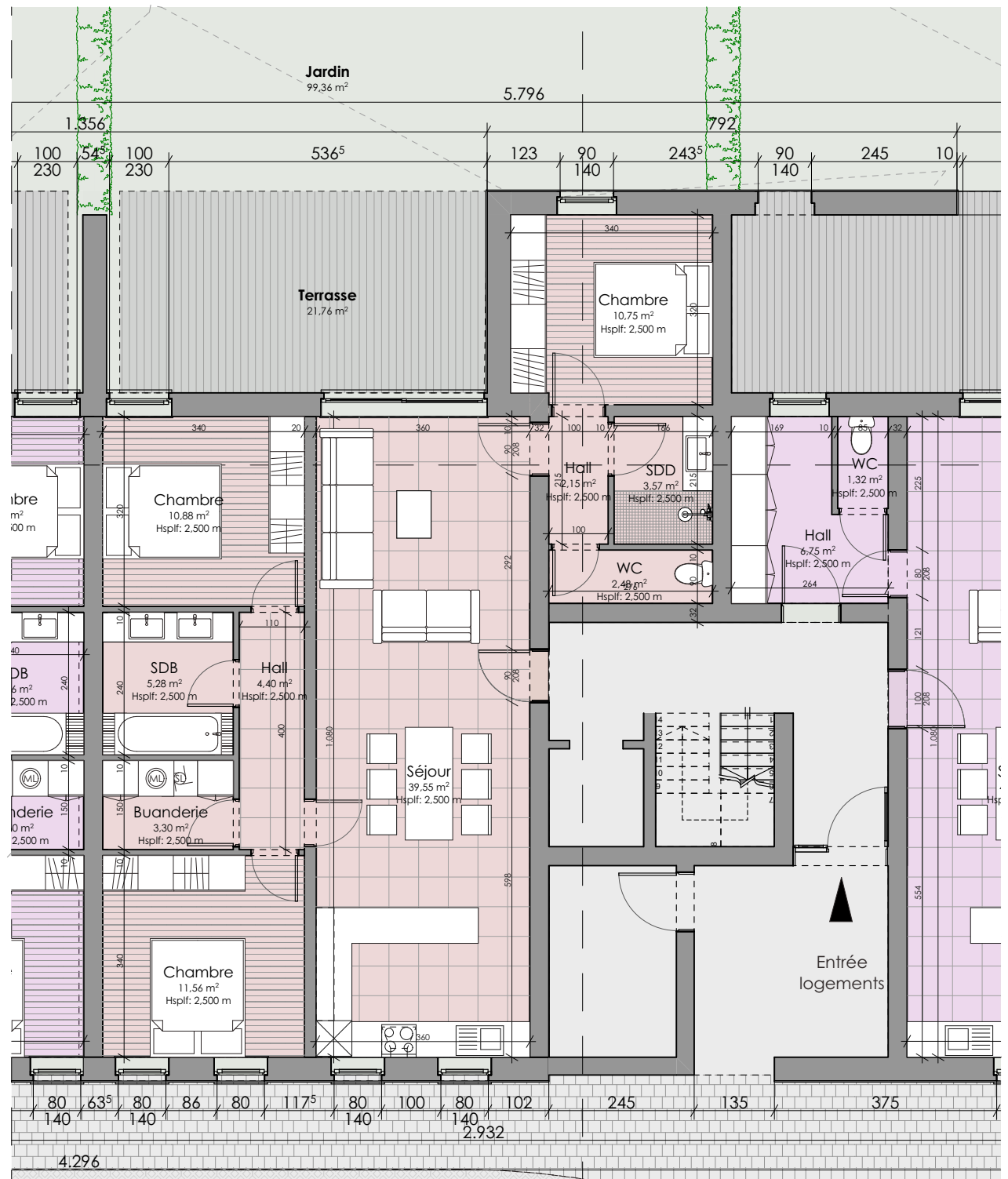


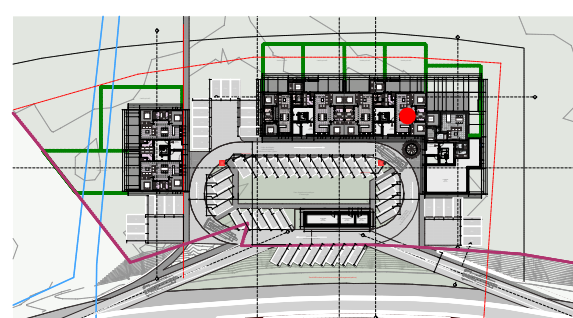


B0-3

Appartement TYPE 12

Surface Brute : 114.91 m²
 Surface nette : 93.92m²

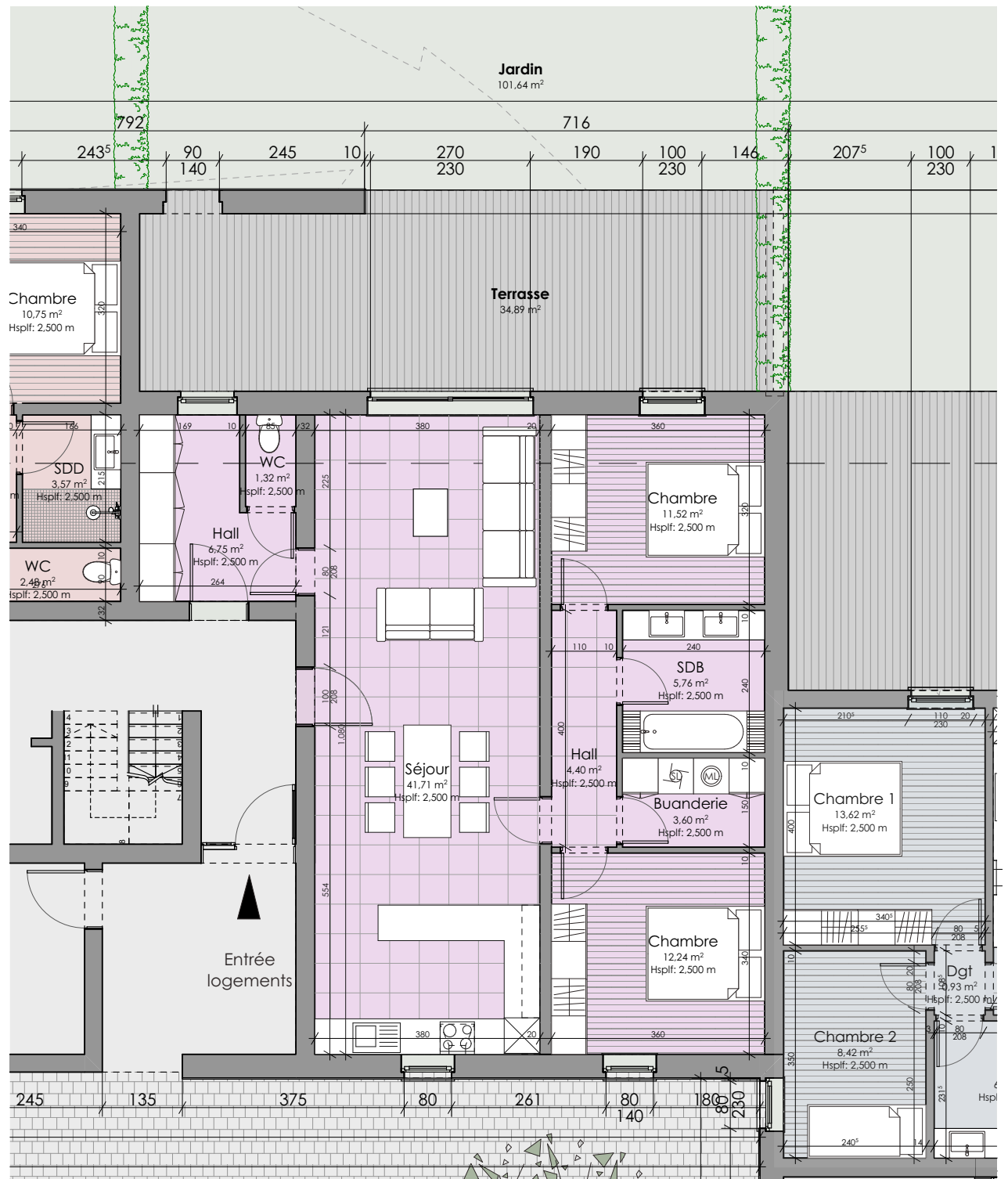


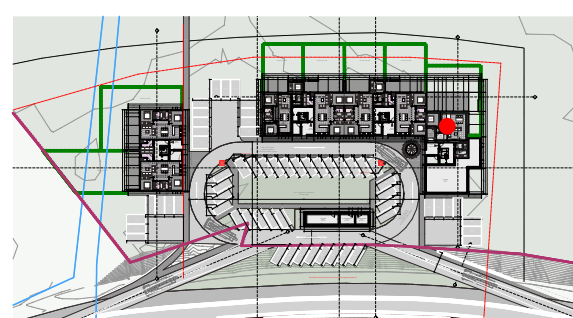


B0-4

Appartement TYPE 1

Surface Brute : 98.66 m²
 Surface nette : 83.42m²

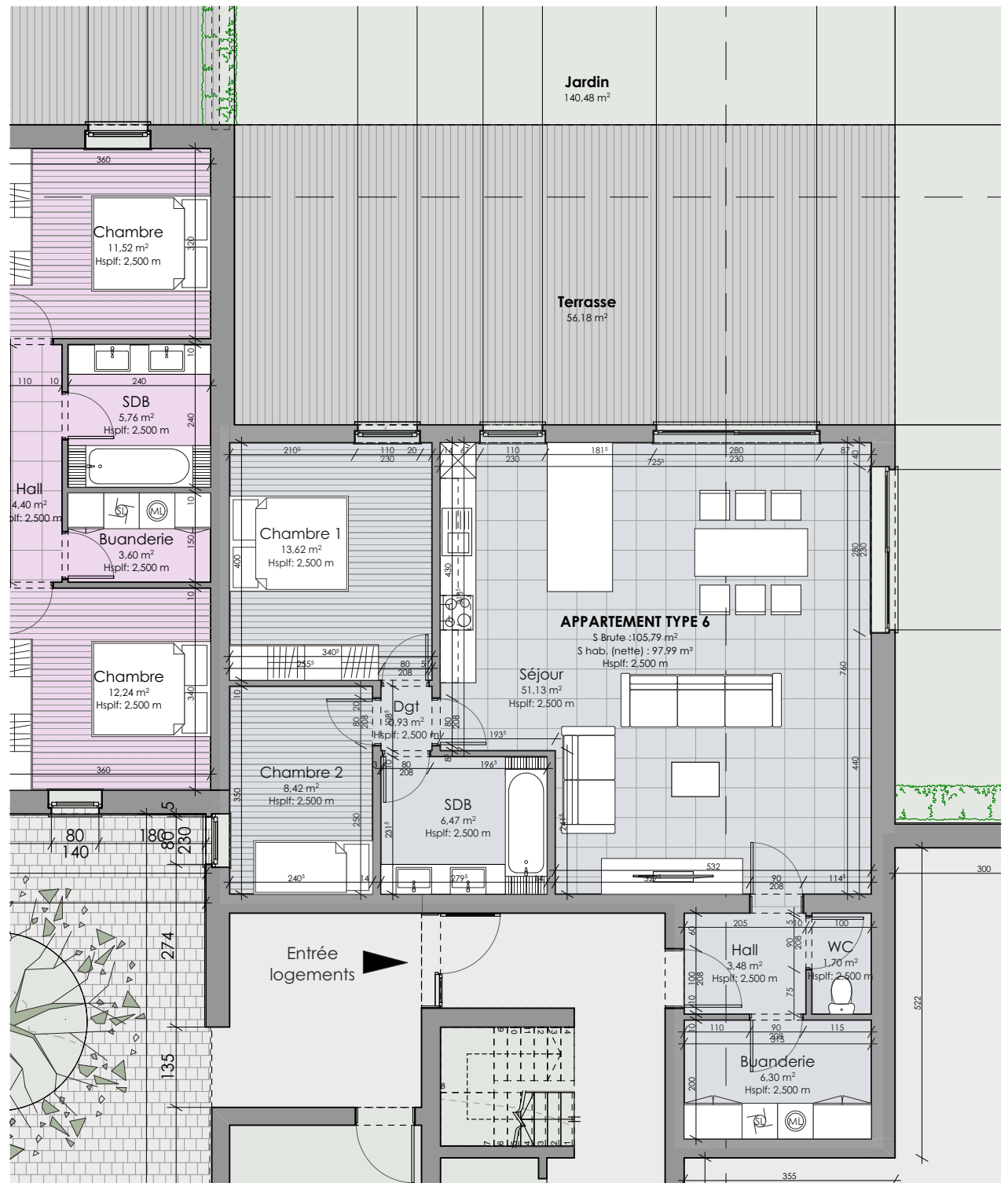


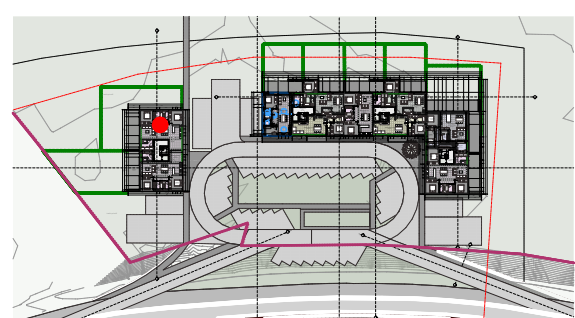


B0-5

Appartement TYPE 6

Surface Brute : 105.79 m²
 Surface nette : 97.99m²

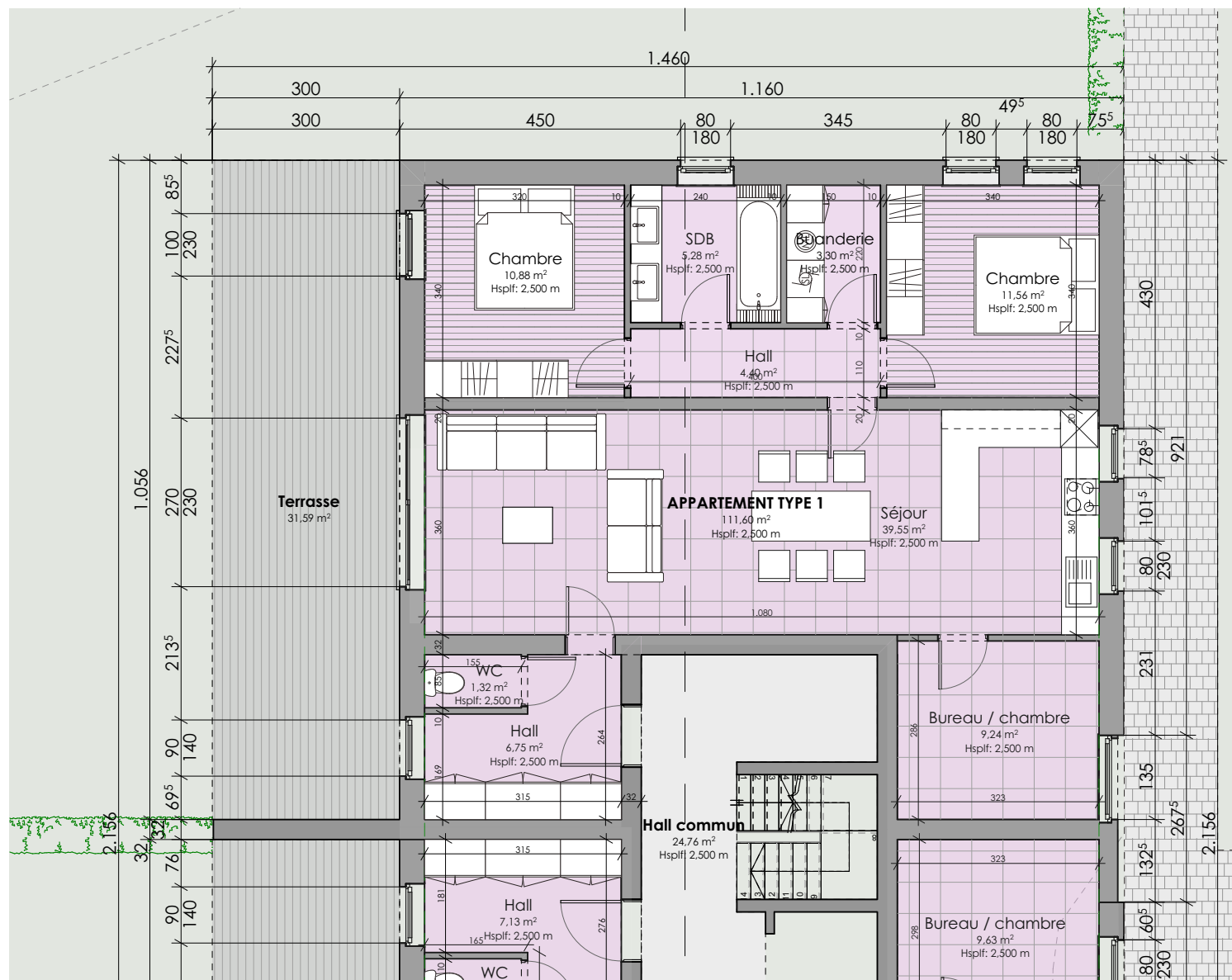


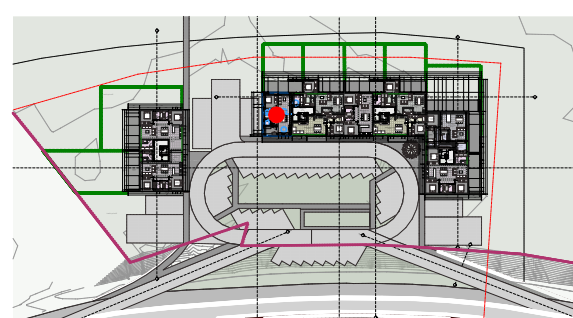


A1-2

Appartement TYPE 1B

Surface Brute : 112.19 m²
 Surface nette : 92.67m²

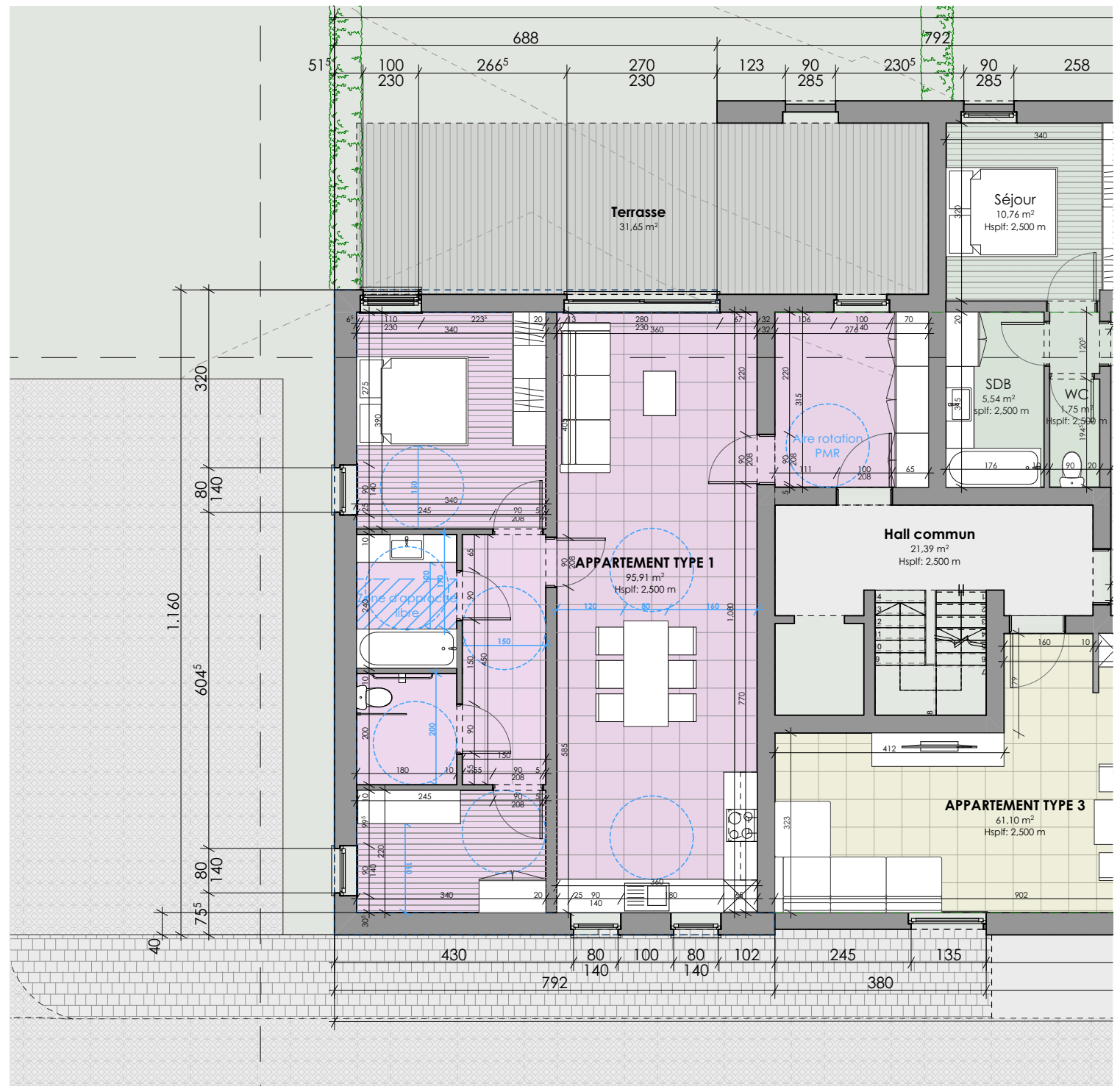


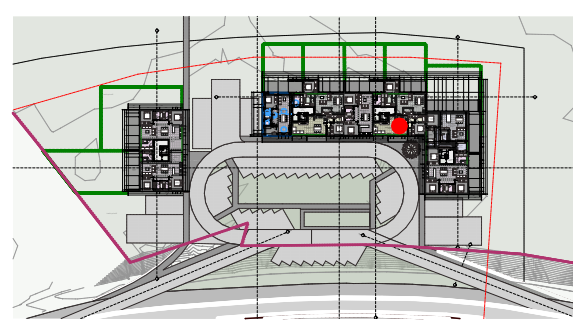


B1-1

Appartement TYPE 1

Surface Brute : 98.66 m²
 Surface nette : 83.42m²

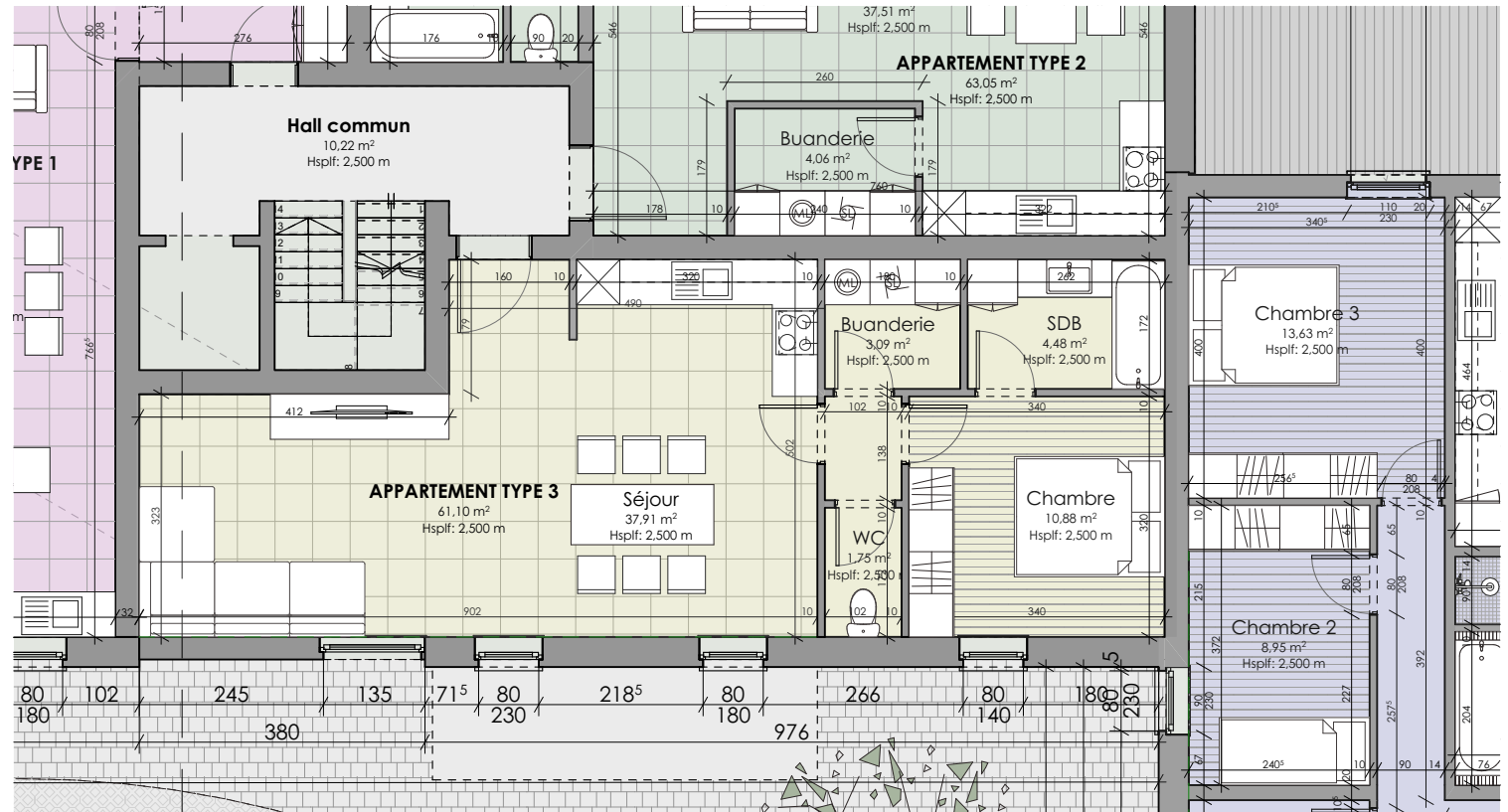




B1-6

Appartement TYPE 3

Surface Brute : 70.50 m²
 Surface nette : 59.54m²

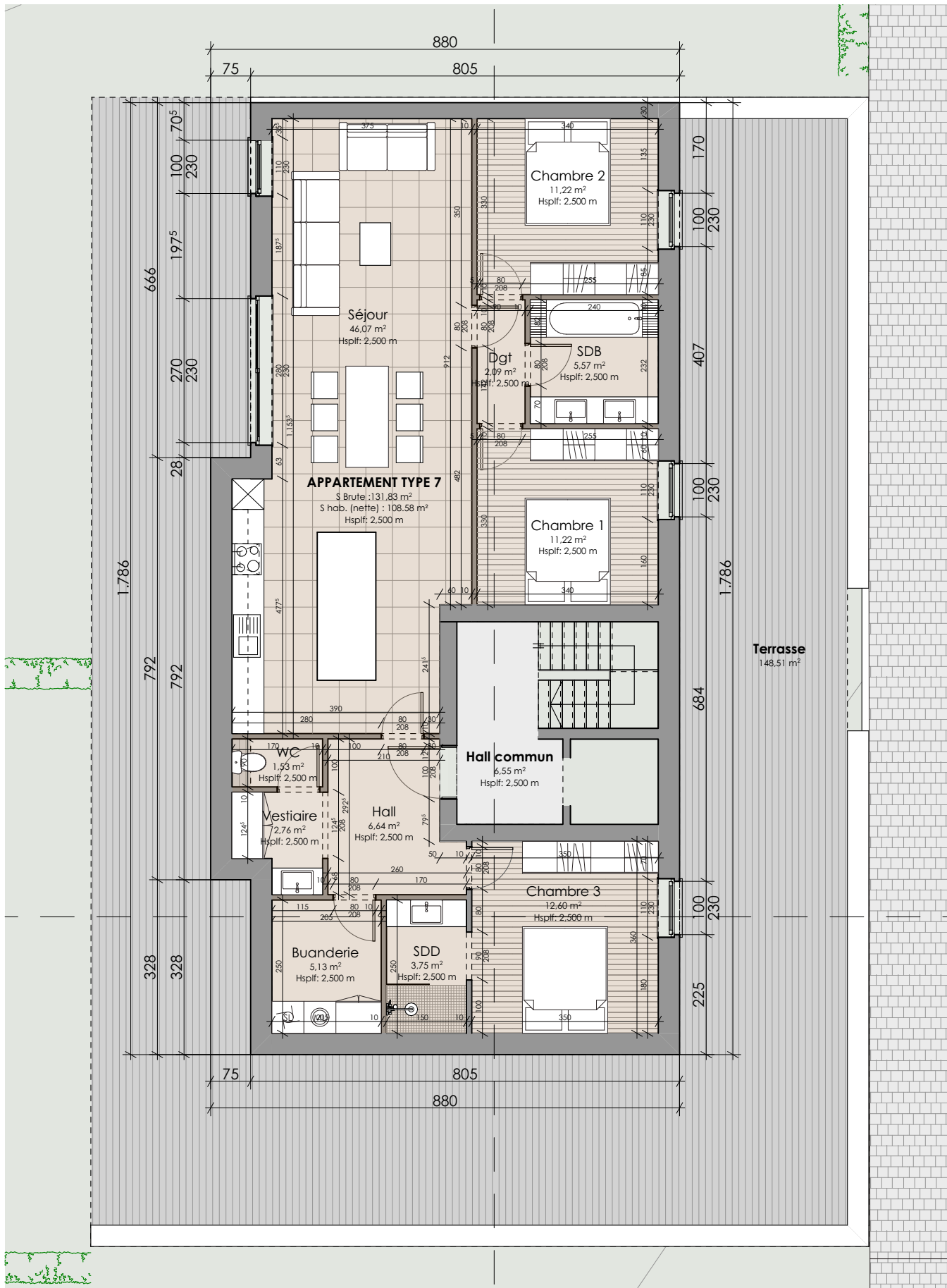


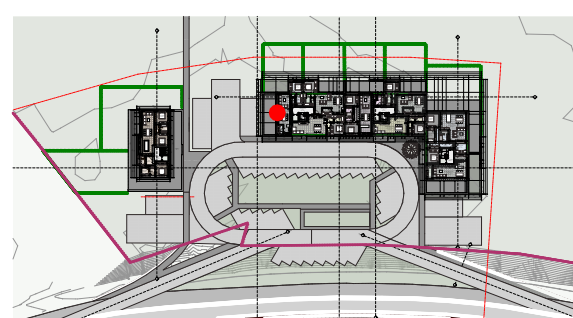
Appartement TYPE 7

Surface Brute : 131.83 m²

Surface nette : 108.58 m²

A2-1

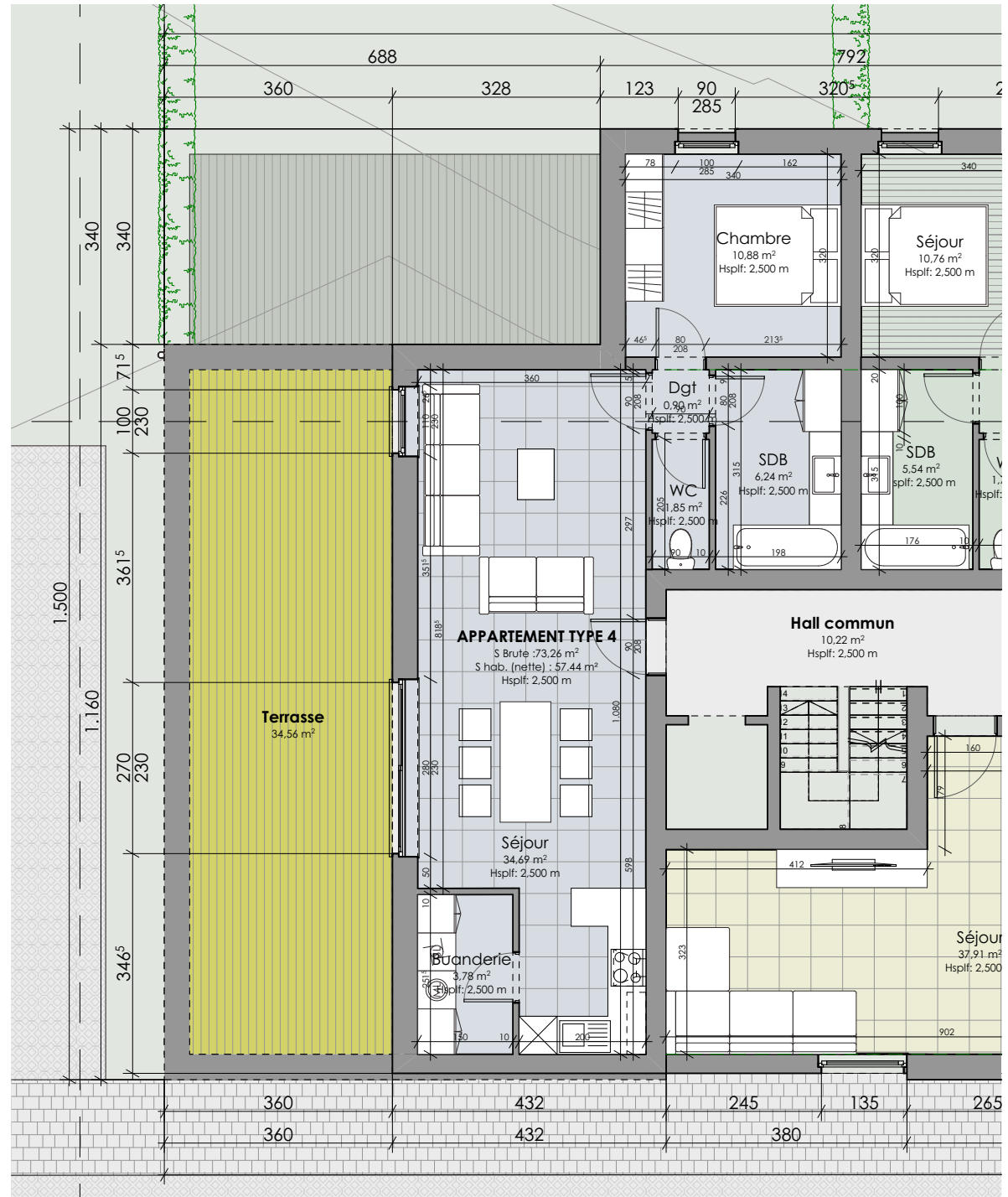


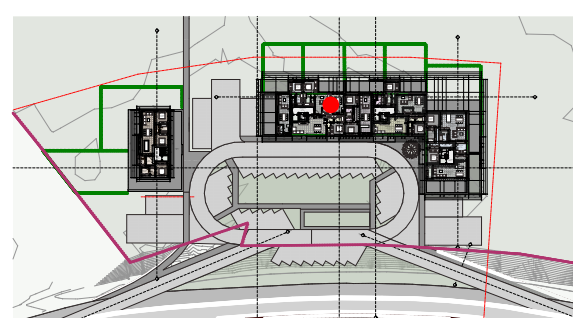


B2-1

Appartement TYPE 4

Surface Brute : 73.26 m²
 Surface nette : 57.44 m²

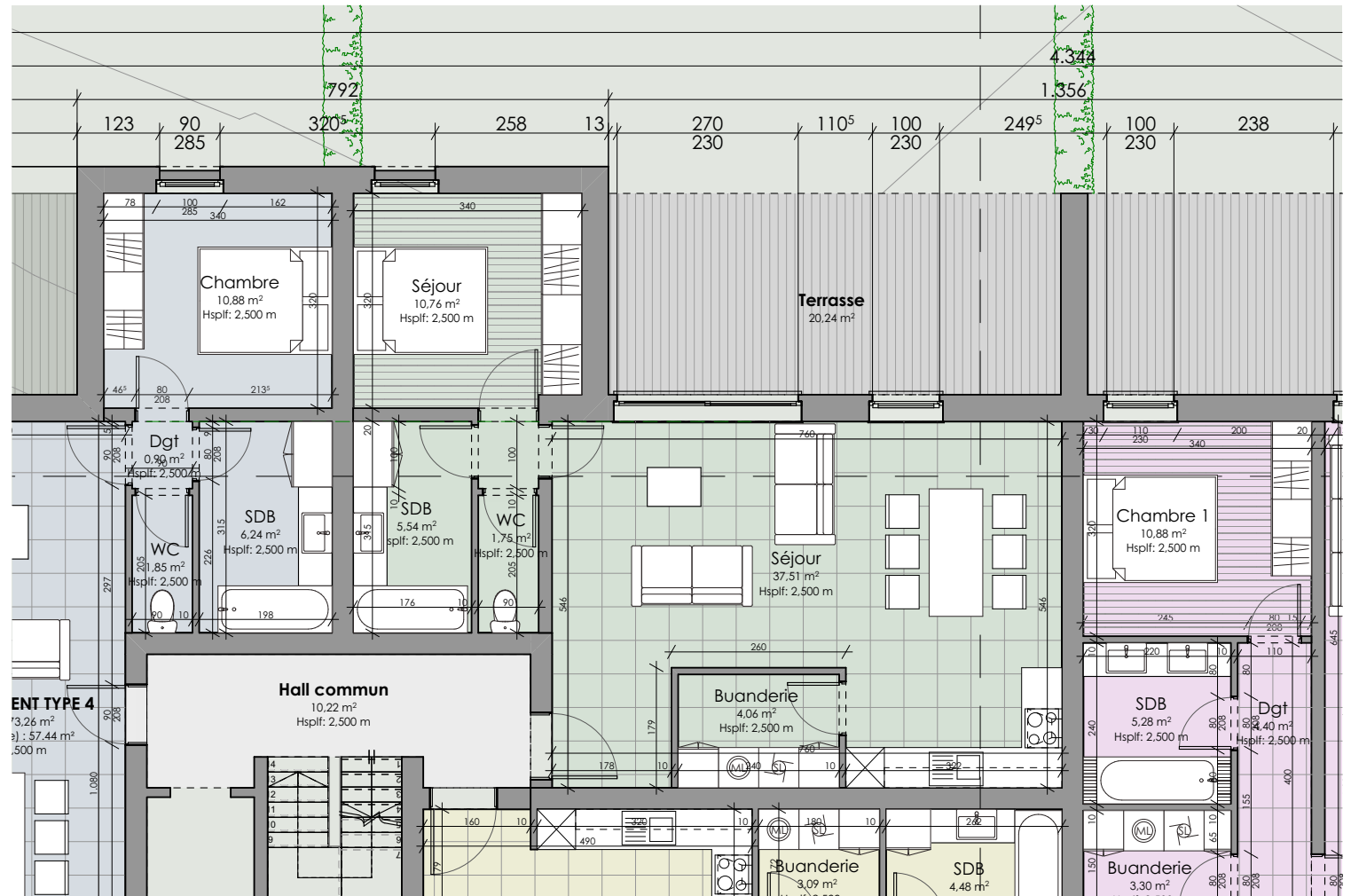


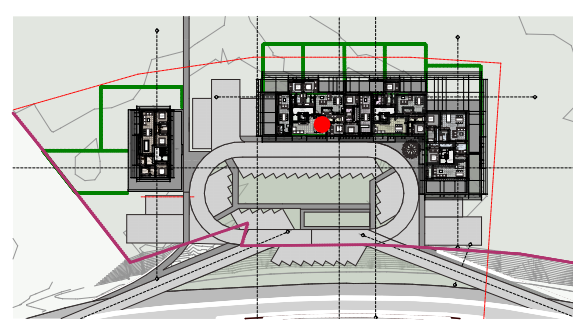


B2-2

Appartement TYPE 2

Surface Brute : 73.34 m²
 Surface nette : 59.62m²

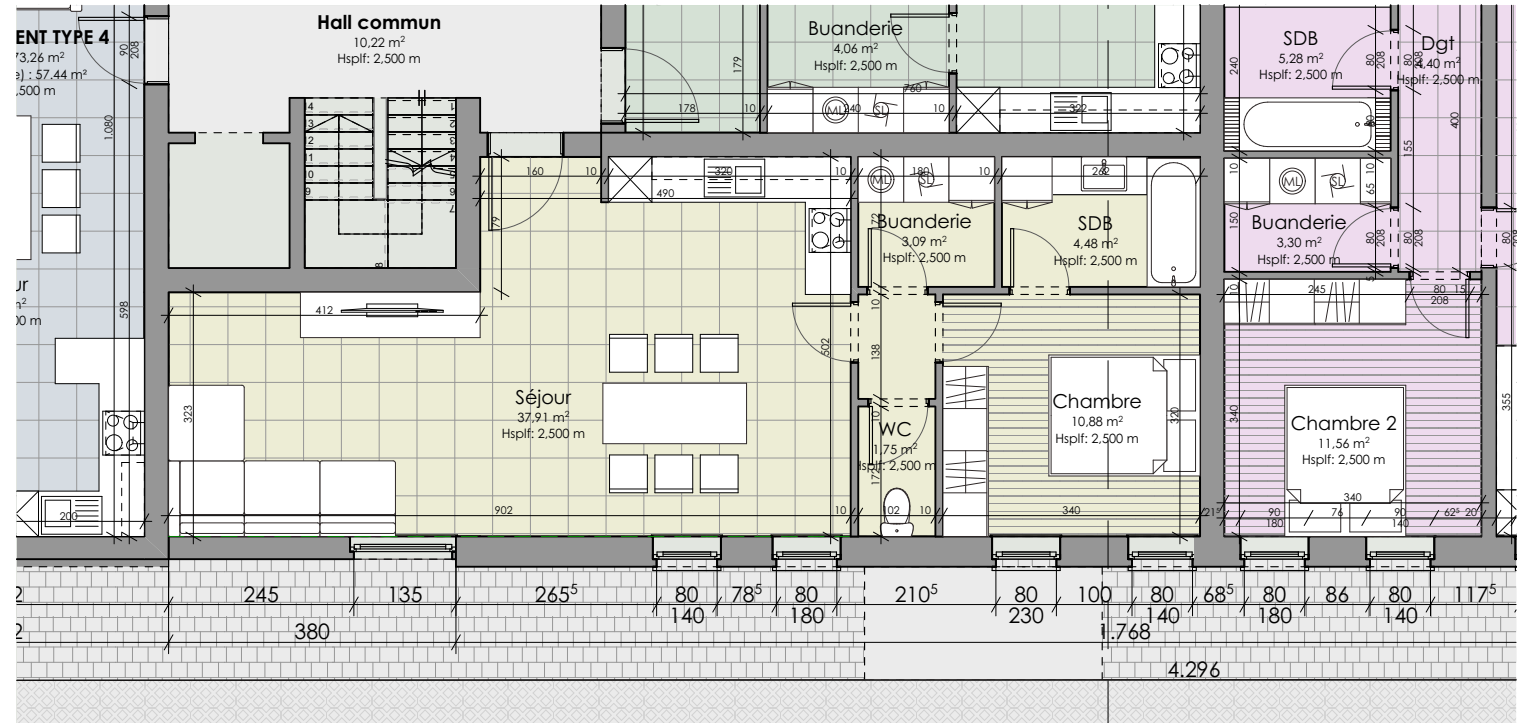


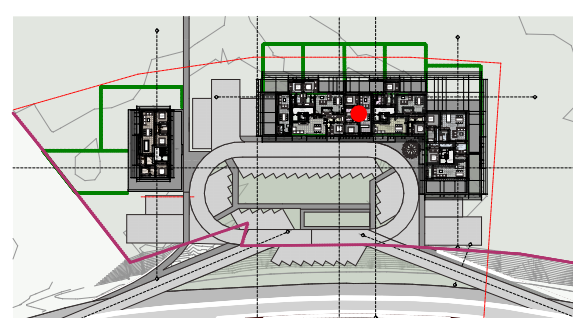


B2-3

Appartement TYPE 3

Surface Brute : 70.50 m²
 Surface nette : 59.54m²

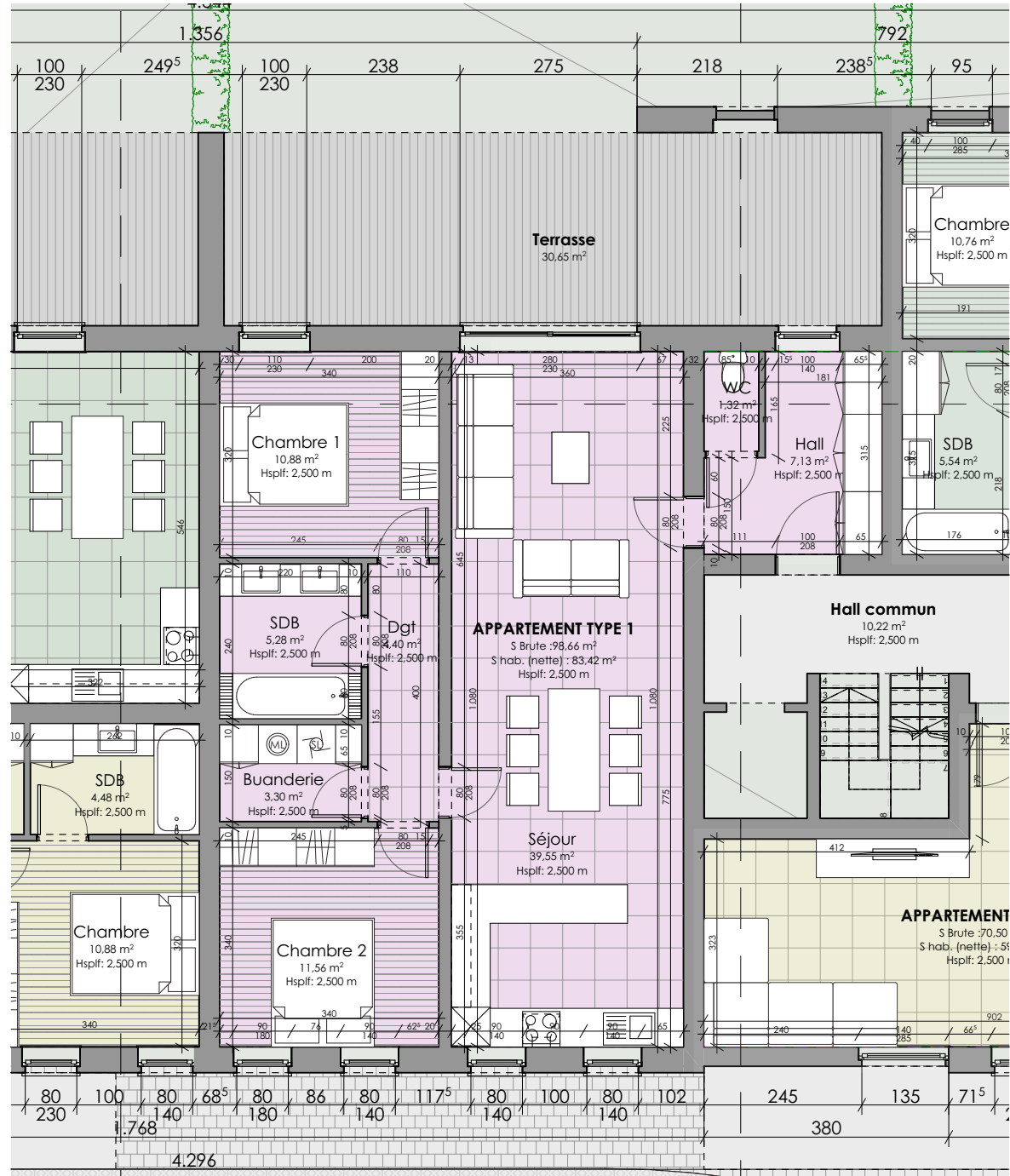


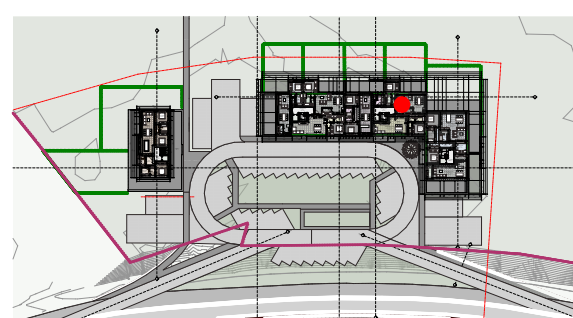


B2-4

Appartement TYPE 1

Surface Brute : 98.66 m²
 Surface nette : 83.42m²



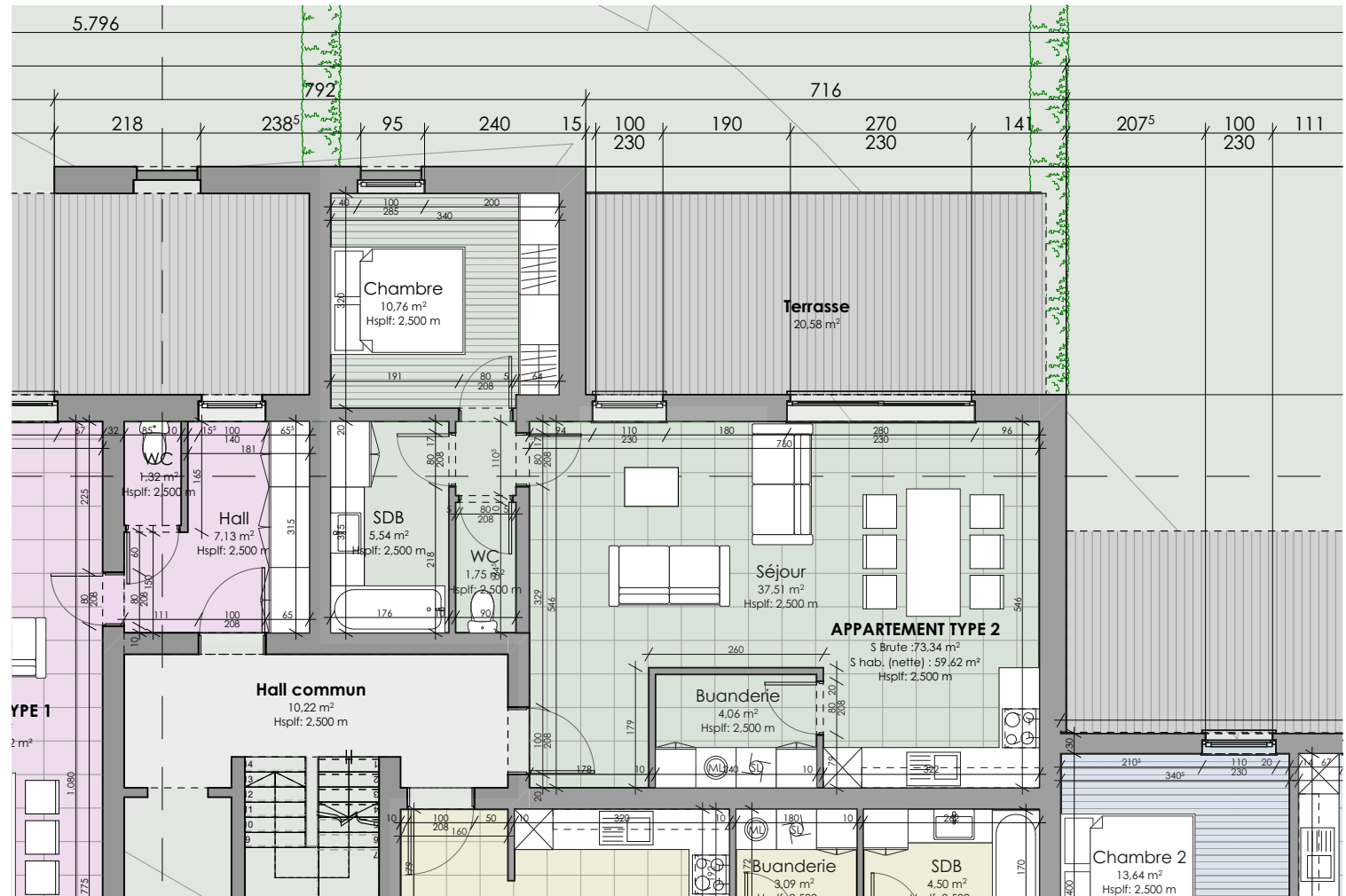


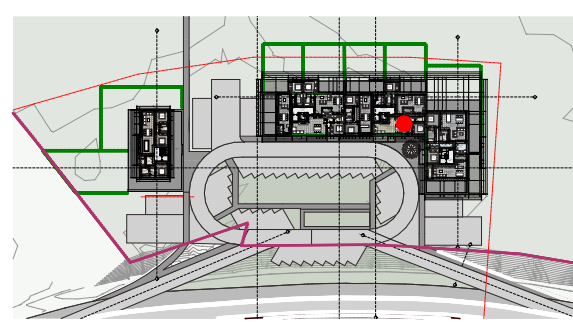
B2-5

Appartement TYPE 2

Surface Brute : 73.34 m²

Surface nette : 59.62m²

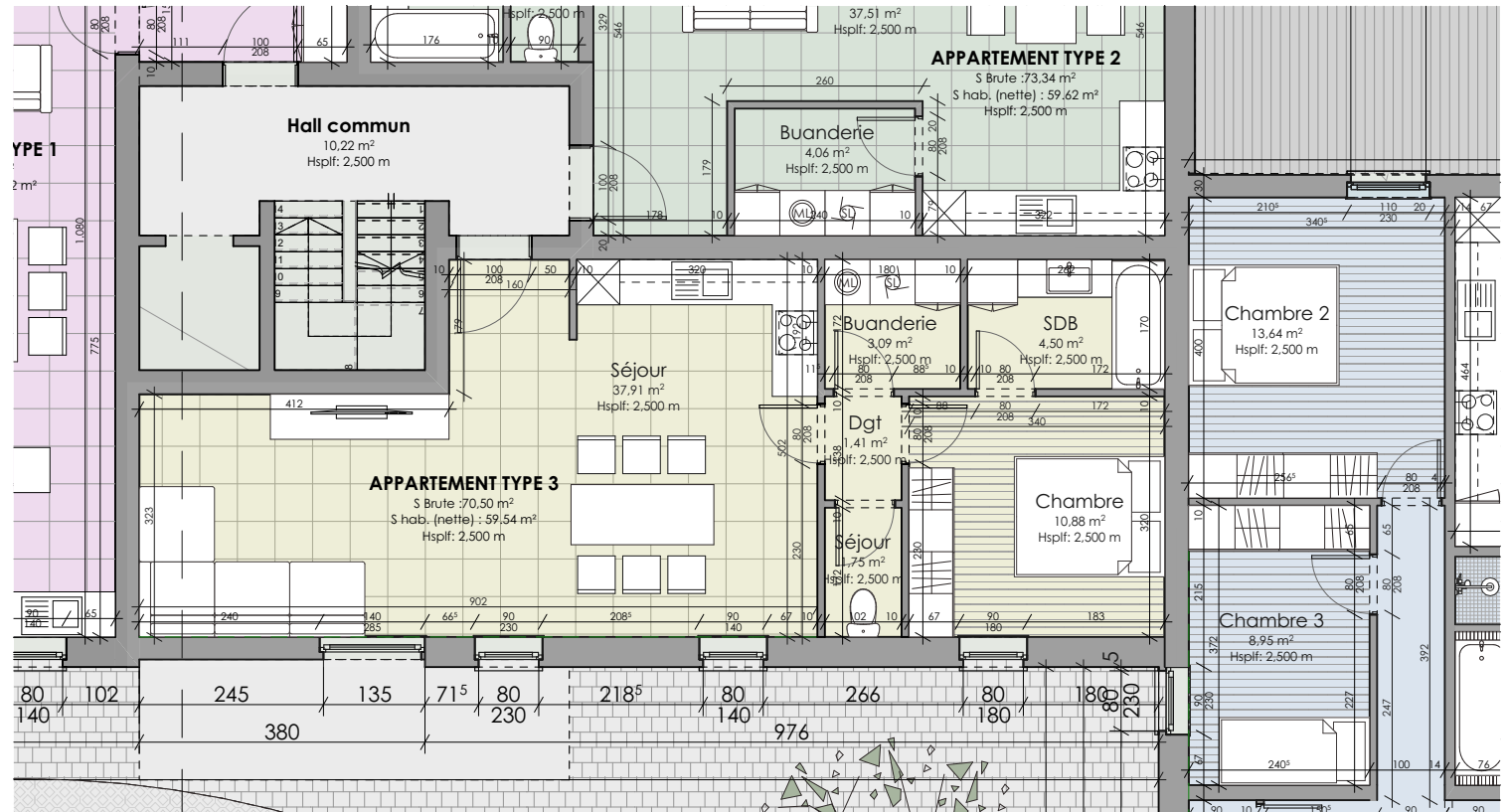


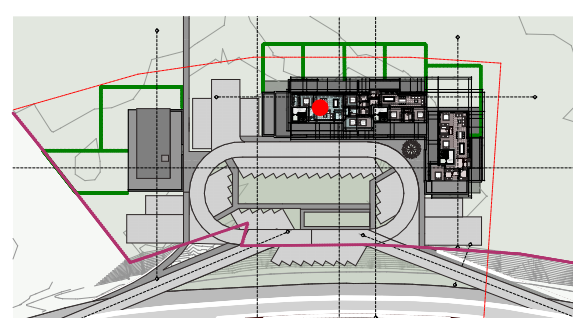


B2-6

Appartement TYPE 3

Surface Brute : 70.50 m²
 Surface nette : 59.54m²

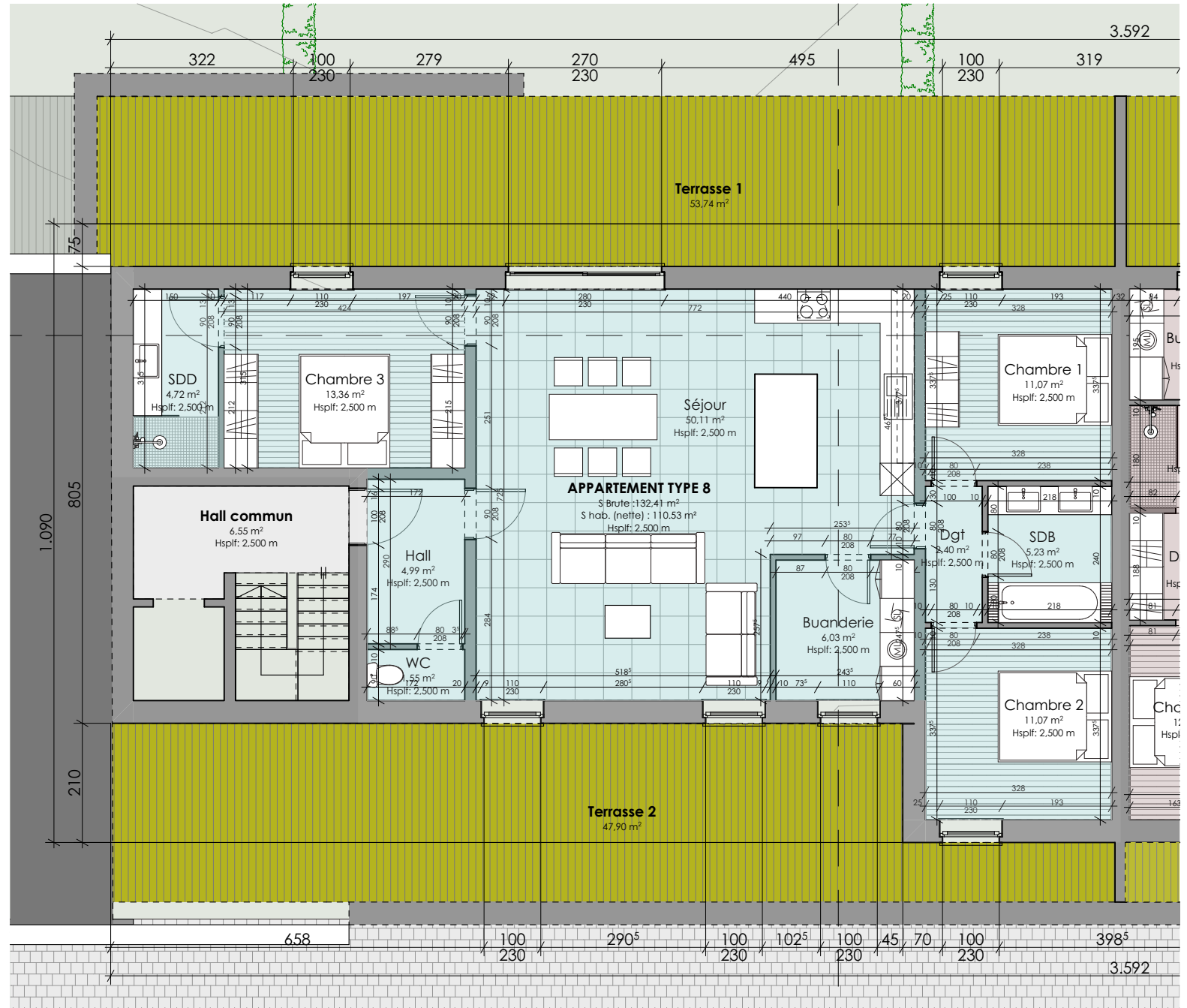


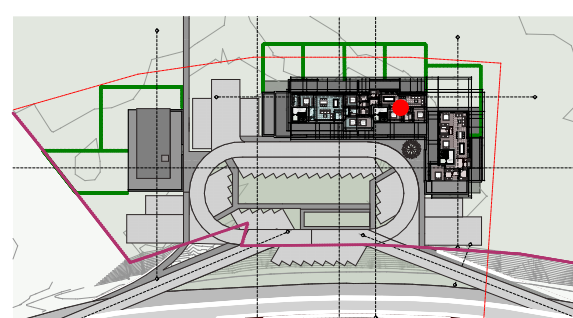


B3-1

Appartement TYPE 8

Surface Brute : 132.41 m²
 Surface nette : 110.53 m²

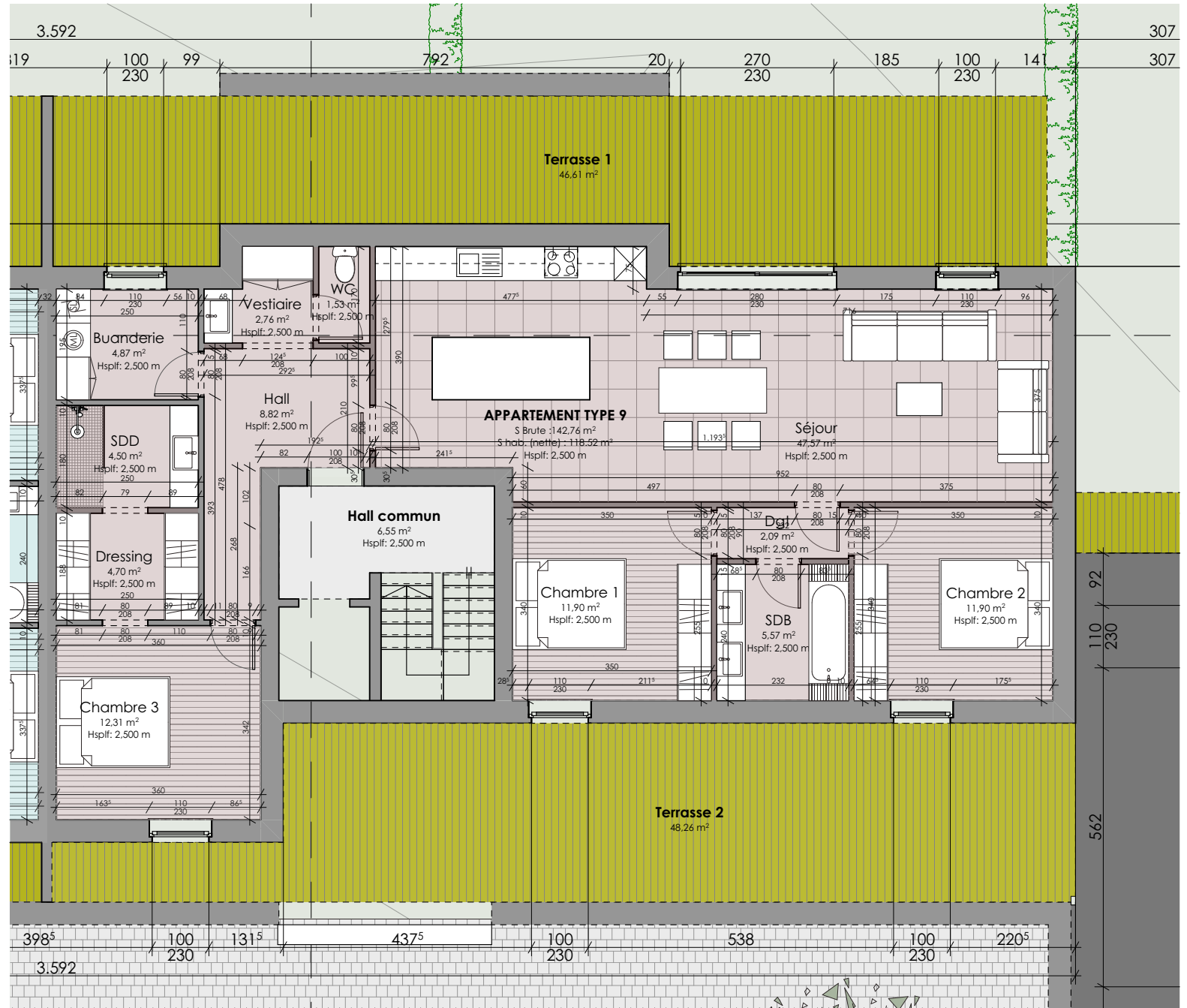




B3-2

Appartement TYPE 9

Surface Brute : 142.76 m²
 Surface nette : 118.52 m²



Appartement TYPE 9

Surface Brute : 142.76 m²

Surface nette : 118.52 m²

B3-3

