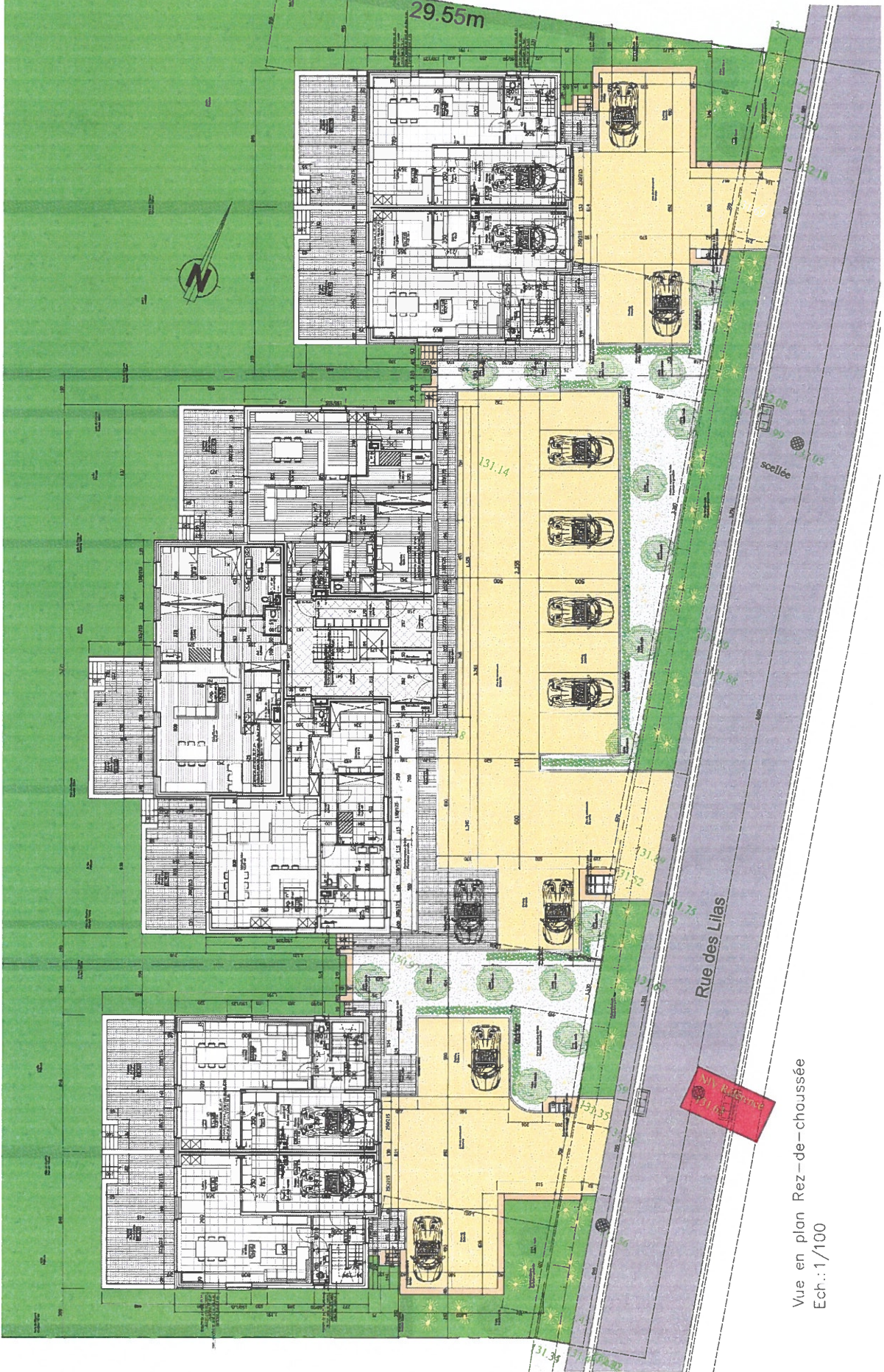


Vue en plan Etage 1  
Ech.: 1/100

33.01m

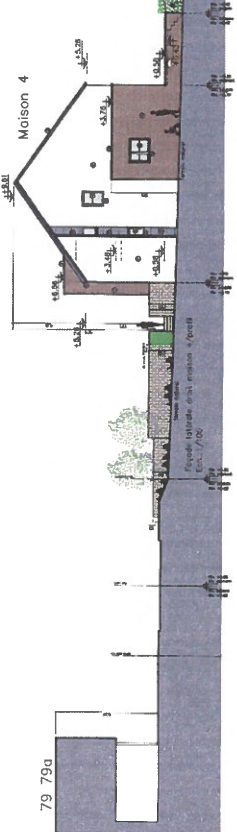
29.55m



Vue en plan Rez-de-chaussée  
Ech.: 1/100

79 790

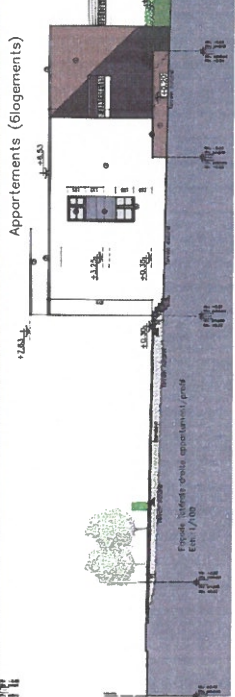
Maison 4



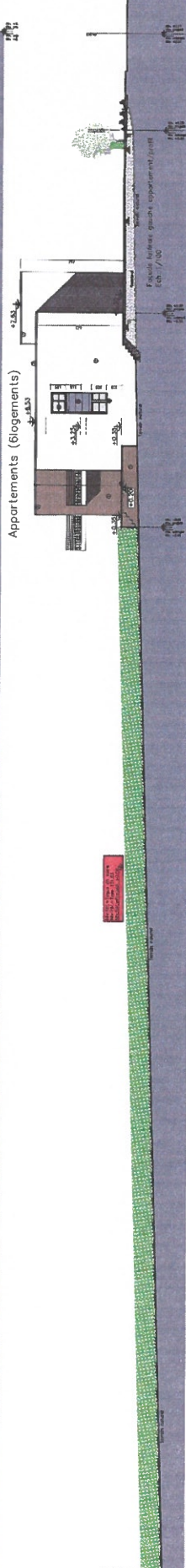
Maison 3



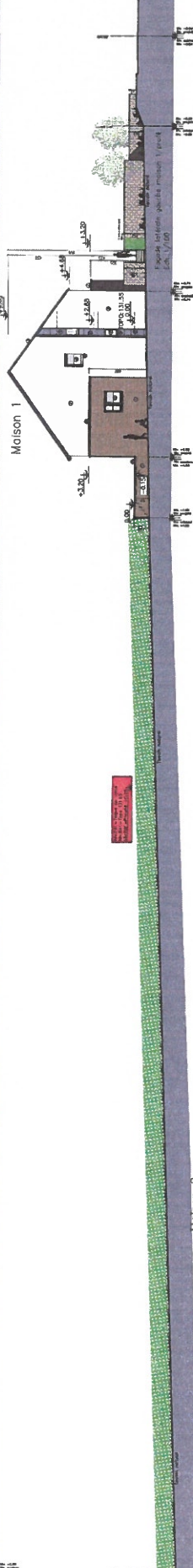
Appartements (logements)



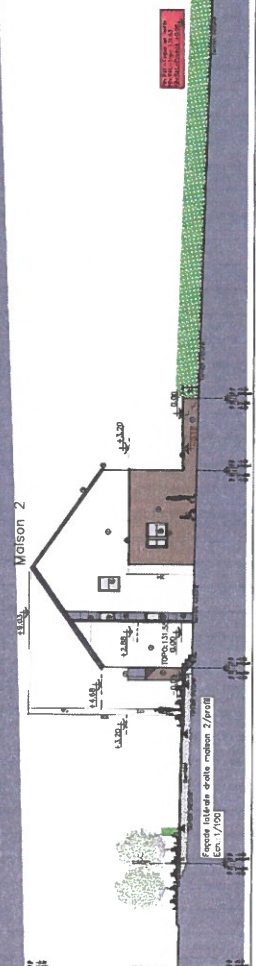
Appartements (logements)



Maison 1



Maison 2



Red rectangular stamp with illegible text.

Red rectangular stamp with illegible text.

Red rectangular stamp with illegible text.

Red rectangular stamp with illegible text.

Red rectangular stamp with illegible text.

83 830

85 850